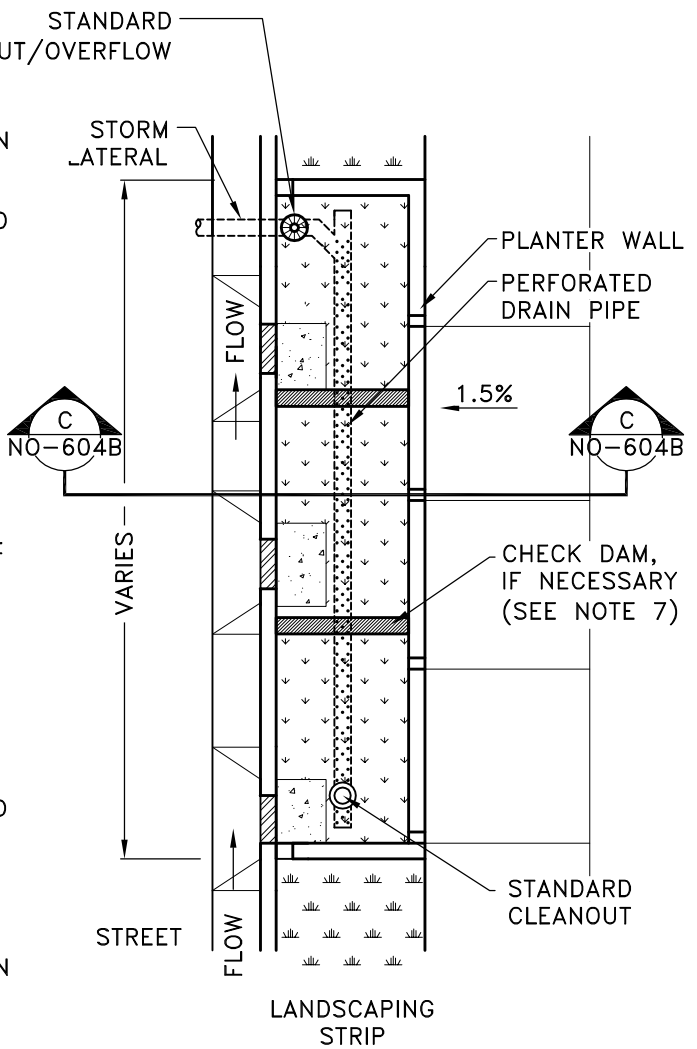


PLANTER WITH PARKING



PLANTER WITHOUT PARKING

NOTES

1. SIDEWALK ELEVATION MUST BE SET ABOVE CHECK DAM AND INLET/OUTLET ELEVATIONS TO ALLOW OVERFLOW TO DRAIN TO STREET OR PIPED OVERFLOW SYSTEM AS APPLICABLE. SIDEWALK ELEVATION TO BE SET AT 1.5% RISE FROM TOP OF FACE OF CURB.
2. MINIMUM INTERIOR PLANTER WIDTH IS 3 FEET. A MINIMUM OF 4 FEET INTERIOR PLANTER WIDTH IS REQUIRED FOR STREET TREES IN PLANTER.
3. PLANTER SHALL BE FLAT BOTTOM IN ALL DIRECTIONS TO WITHIN A HALF INCH.
4. STREETSIDE CURB NOTCHES TO BE LOCATED AS IDENTIFIED ON PROJECT PLANS.
5. SIDEWALK DRAINAGE NOTCH: 1" LOWER THAN SIDEWALK, SLOPED TO FACILITY. SIDEWALK DRAINAGE NOTCHES SHALL ALIGN WITH SIDEWALK CONTRACTION JOINTS AND LOW POINTS.
6. SPLASH PAD: INSTALL CONCRETE SPLASH PAD AT EACH CURB NOTCH.
7. CHECK DAMS SHALL BE PLACED ACCORDING TO INDIVIDUAL PROJECT PLANS.
8. ALL PCC SURFACES SHALL BE SMOOTH AND FREE OF DEFECTS, AND SHALL HAVE A LIGHT BROOM FINISH.
9. ACTUAL ELEVATIONS AND RELATIONSHIPS BETWEEN FIGURES TO BE CONSTRUCTED AS IDENTIFIED ON PROJECT PLANS.

CITY OF ALBANY, OREGON		
PUBLIC WORKS DEPARTMENT		
STREETSIDE PLANTERS		
PLAN VIEW		
NO SCALE	JULY 2019	NO. 604A